



HETL NEWSLETTER 2023 - THIRD QUARTER

HETL Highlights | Engage with HETL | HETL Members and Partners

HETL HIGHLIGHTS

Call for Proposals for [HETL Frontiers](#)



The aim of the HETL Frontiers magazine is to present diverse perspectives and ideas on the emerging trends in higher education development, innovation, sustainability, and educational futures, across the core functions of higher education: teaching, research, and service.

List of topic areas

- Global leadership in international higher education
- International cooperation among faculty and institutions
- International teaching and learning
- International research and innovation
- Global citizenship education
- Advancing equity and inclusion in international higher education
- Interculturalism in international higher education
- International curricula and assessment
- International students as global citizens
- Student mobility models

Submit your proposal (use HETL Frontiers Volume 2 Number 1 Submission in the email subject field) to both Dr. Martina Jordaan at martina.jordaan@up.ac.za, cc'ing Dr. Patrick Blessinger at patrickblessinger@gmail.com.

Deadline for proposal submissions: **30 October 2023**
Deadline for complete articles: **04 December 2023**

[Submit Proposal](#)

[View Latest Edition](#)

Call for Application: Emerald Outstanding Doctoral Research Awards (ODRAs)



Rewarding doctoral research that addresses the grand challenges

Emerald and HETL are proud to support the global research community through an award programme that recognises exceptional doctoral research that addresses the United Nation's Sustainable Development Goals (SDGs).

We believe in quality education for everyone, everywhere.

Our goal is to help find solutions to the disparities across the world by supporting researchers working in this area.

List of research areas

- The future of learning
- Educational leadership
- Sustainability in higher education
- Remote teaching, learning and collaboration
- Lifelong learning
- Reducing inequality in education
- Sustainability

You don't need to submit your full thesis to enter, but you need to succinctly summarise the most important parts of your research. Entries will be judged by leading scholars working in the field of education.

If you've completed your doctorate within the last three years, apply now!

Deadline for submissions: **10 October 2023**

[Submit Paper](#)

Thank you for making HETL Aberdeen 2023 a success!



In Partnership with



brought you

[Re-Imagining Education: Collaboration and Compassion](#)

Venue: University of Aberdeen, Aberdeen

Thank you for making it a success! HETL Aberdeen 2023 was our first completely in-person conference since COVID disrupted lives across the world. Aberdeen conference was attended by 275 delegates from 20 countries making it a diverse experience. If you want to know more about our future conferences, subscribe to HETL Newsletter and Stay Informed!

[Stay Informed](#)

HETL Webinar Series - Inclusive Leadership in HE



In Partnership with



brings you

[View Presentation](#)

The chief aim of inclusive leadership in higher education is to create a supportive and collaborative academic environment that promotes diversity, equity, and inclusion for all throughout the institution. Inclusive leadership is rooted in the values of dignity, well-being, and accountability. Inclusive leadership addresses all aspects of teaching, learning, and curricular activities. This workshop addressed the key concepts of diversity, equity, and inclusion and will give participants opportunities for reflection and practice via whole group lecture/discussions and small group learning activities/discussions (breakout rooms).

HETL Webinar Series - Educational Leadership Leadership



In Partnership with



brings you

[Watch Video](#)

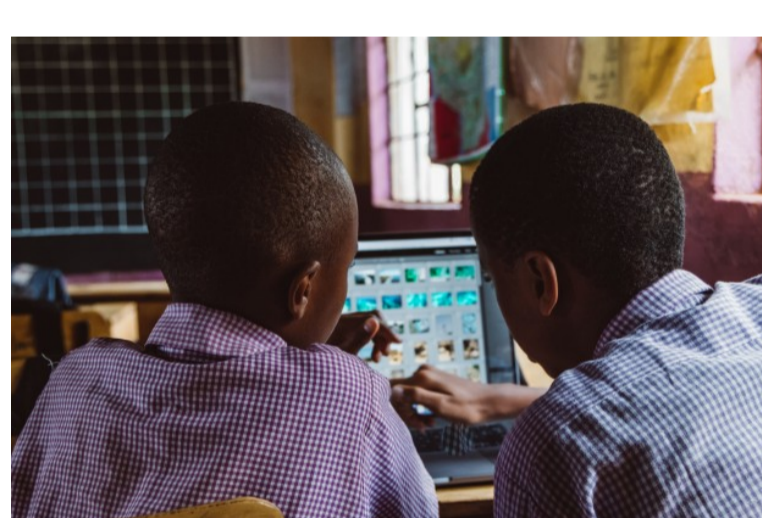
Educational leadership involves working with teachers and instructors in order to improve educational outcomes at all levels. It is critical to academic success for all students; done well, it positively affects staff and student morale, performance, and outcomes. It starts with setting a vision and mission for the institution and then marshalling the resources, policies, strategies, and processes needed to achieve that vision and mission. But what are the main challenges affecting school leaders? How can they structure decision-making to be more effective? How can leaders create an organizational culture that aligns with their vision and mission? And how can they create an inclusive and supportive culture for other leaders in schools?

Featured Articles



[Accelerating The 2030 Agenda Through Inclusive Citizen Science](#)

The COVID-19 global pandemic concretely illustrates how interconnected and interdependent the world has become. The COVID-19 pandemic illustrates, in stark terms, how events that occur in one part of the world, no matter how remote, can have an immediate impact on other parts of the world.



[Building Resilient Learning Ecosystems](#)

The COVID-19 pandemic (from March 2020 to May 2023) had a significant impact on every segment of society around the world. The pandemic caused over 750 million people to contract the virus and it resulted in nearly seven million deaths worldwide, making it one of the deadliest.



[Are We Underestimating or Overestimating How ChatGPT is Impacting Teaching? Yes](#)

Does ChatGPT, and artificial intelligence in general, represent an emerging paradigm shift in education - will it have a transformative effect on learning - or is it a passing technology trend whose impact is too early to determine?



[Sustainability Means Recognising Our Connection with Nature](#)

In the modern era of globalisation, contemporary societies have become hyper-interconnected and hyper-interdependent. Modern information and communication systems will continue to become more globally integrated in order to increase the quality of service and security.

ENGAGE WITH HETL

Subscribe to "[Learning Futures](#)" on LinkedIn



IHETL Association has expanded its digital footprint on LinkedIn with a LinkedIn Newsletter called "Learning Futures" where we help you reimagine and rethink how education, knowledge, and learning can transform the future of humanity. Subscribe to our newsletter on LinkedIn to stay updated with ways higher education can shape up and transform the future of humanity

[Subscribe Now](#)

Call for Country Directors



[HETL Country Directors](#)

HETL Country Directors are educational leaders who represent HETL to the global higher education community in their countries/regions. HETL Country Directors help promote the mission, vision, and values of HETL around the world. They represent HETL's interests in their countries/regions as well as represent the interests of their own countries/regions to HETL.

Send your expressions of interest to: patrickblessinger@gmail.com

Call for Papers



[Submit to JARHE!](#)

Become a Member



[Become a Member!](#)

HETL MEMBERS & PARTNERS

Featured reports, videos, and publications



Policy Brief: The "S" in "STEM": Education and policies amid and post-COVID-19.



Higher Education Tomorrow



IAU Horizons December 2021 Issue



UNESCO Futures of Education Report



ICIE journal, International Journal for Talent Development and Creativity



University World News